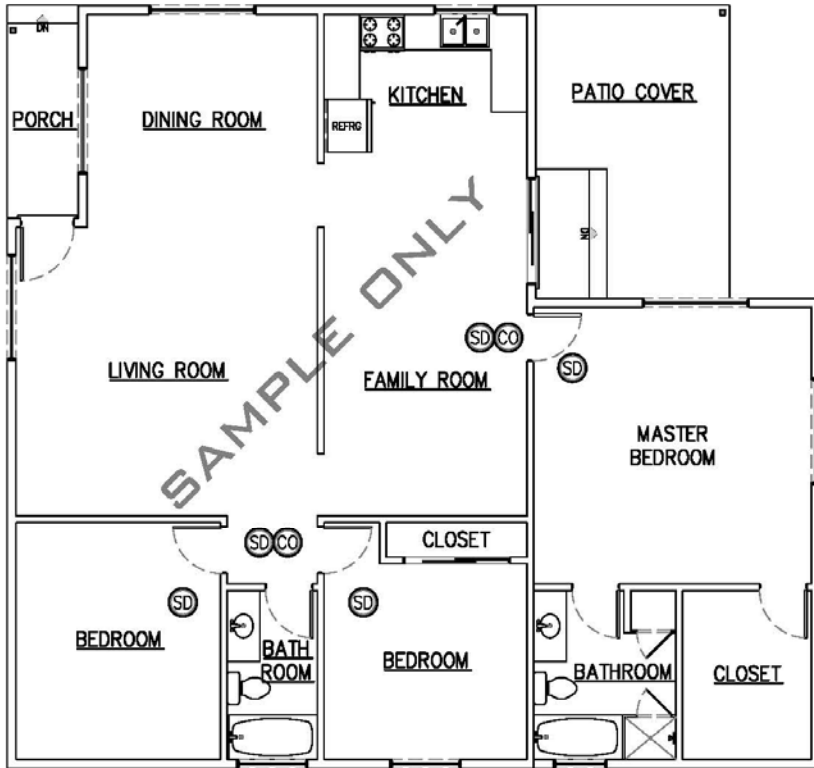


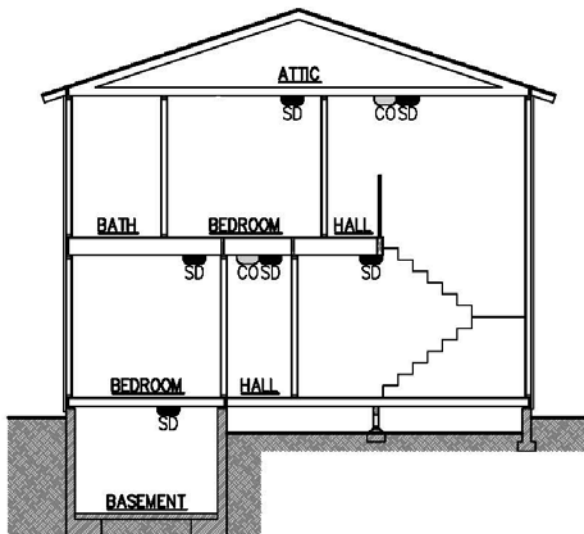


Public Works Department
BUILDING DIVISION
 1444 West Garvey Avenue
 West Covina, CA 91790
 626-939-8425

SMOKE AND CARBON MONOXIDE DETECTORS



SINGLE LEVEL HOMES



MULTI-LEVEL HOMES

- SD
CO SMOKE DETECTORS
 SD
CO CARBON MONOXIDE DETECTORS
- SD/CO COMBINATION SMOKE/CARBON MONOXIDE DETECTORS MAY BE USED IN LOCATIONS INDICATED WITH SD/CO

CODE: CRC Sections R314 and R315

POWER SOURCE:

Smoke and Carbon Monoxide detectors shall be hardwired with battery. Retrofit detectors may be battery operated in rooms where construction is not proposed.

INTERCONNECTION:

Smoke and Carbon Monoxide detectors shall be interconnected so that the activation of one alarm shall activate all other alarms in the dwelling unit.

LOCATIONS:

Smoke Detectors:

1. In each sleeping room.
2. Centrally located in rooms and corridors giving direct access to each sleeping area.
3. On each story of multistory dwellings including basements and habitable attics.
4. In split-levels without an intervening door, smoke alarms shall be installed on the upper level provided that the upper level is less than one full story above the lower. If the lower level contains sleeping areas, then it too shall be equipped with a smoke alarm.

Carbon Monoxide Detectors:

1. Outside of and within immediate proximity to each sleeping room.
2. On each story of multistory dwellings including basements and habitable attics.